

Newark Rotary Committees 2016-2017

President	Jack Neely	Home 740-344-1219	Office 740-366-5050
Secretary	Tom Slater	Home 740-366-6143	Cell 740-398-1690
Treasurer	Ray Barber	Home 614-834-0657	Office 740-366-4444
Immediate Past President	Ed Bohren	Cell 740-404-8112	Office 740-349-9688
District/International Service	Chuck Moore	Home 740-455-2074	Office 740-344-7401
Rotary International Foundation	Mike Massaro	Home 740-344-4852	Office 740-349-5400
	Michele Layman	Home 740-454-2356	Office 740-788-1488
Grants	Gary Baker	Home 740-344-2044	Office 800-255-6815
World Service	Sharon Phelps	Home 740-587-2360	Office 740-587-5298
Group Study Exchange	Tom Marcelain	Home 740-344-7895	Office 740-670-5777
Polio Plus	Dave Shull	Home 740-344-6533	
100th Anniversary Committee	Michele Layman	Home 740-349-7844	Office 740-344-0311
Newark Rotary Foundation President	Cheryl Snyder	Home 740-587-4190	Office 740-349-3773
Club Service	Jack Stickle	Home 740-345-1507	Office 740-345-9864
Fellowship/Logistics	Eric Ricketts	Home 740-344-8709	
	Jerry Krebs	Home 740-366-7700	Office 740-334-2469
Club Programs	Bob McGaughy	Home 740-366-5803	
Chaplains	Dennis Hesselgesser	Cell 740-344-3888	Office 740-258-3447
	Wes Humble	Home 740-258-3000	Office 740-344-2651
Music	Tom Slater	Home 740-366-6143	
Audio Visual	John Carson	Home 740-975-9279	Office 740-788-9000
Sergeant-at-Arms	Pat Jeffries	Home 740-344-3980	Office 740-334-8302
Communications/PR	Rick Platt	Home 740-344-7383	Office 740-788-5500
Communications/Rotogram	Mike Shearer	Home 740-366-5316	Office 740-328-8820
Data Management	Pat Jeffries	Home 740-344-3980	Office 740-334-8302
Historian	Steve Ehret	Home 740-366-8923	Office 740-345-9791
	Glenn Abel	Home 740-366-6108	
Social	Laura Lewis	Home 740-587-0989	Cell 740-403-1829
New Generations	Barb Quackenbush	Home 740-364-1290	Office 740-670-7041
Scholarship Search	Molly Ingold	Home 740-366-3184	Office 740-34-4-0311
Youth Exchange	Tony Adams	Cell 740-334-7792	Office 740-349-8055
4 Way Speech	Scott Kennedy	Home 740-344-5709	Office 740-345-5222
Student Visits	Nelson McCray	Home 740-323-1130	Office 740-349-6084
	Doug Ute	Home 740-262-0259	Office 740-670-7000
Read with Me	Jennifer Utrevis	Home 740-788-9556	Office 740-349-9646
Free Enterprise Academy	Denny Hesselgesser	Cell 740-344-3888	Office 740-258-3447
	Erich Horvath	Home 614-374-4059	Office 740-920-4099
Interact	Rick Platt	Home 740-344-7383	Office 740-788-5500
Vocational Awareness	Rick Platt	Home 740-344-7383	Office 740-788-5500
Membership	Pat Jeffries	Home 740-344-3980	Office 740-334-8302
Orientation	Ed Bohren	Cell 740-404-8112	Office 740-349-9688
	Molly Ingold	Home 740-366-3184	Office 740-788-1492
Mentorship	Jeff James	Home 740-587-4447	Office 740-587-2746
	Marcia Downes	Home 740-587-4695	Office 740-349-9277
Auction	Angie Ryan	Home 740-366-6054	Office 740-522-2149
	Kevin Murphy	Home 740-587-1079	Office 800-727-7730
Attendance	Jim Withers	Cell 740-877-0480	
Career Fair	Lori Hubble	Home 740-404-9098	Office 740-522-0000
Community Service	Michael Shearer	Home 740-366-5316	Cell 740-973-1569
Special Needs	Talya Greathouse	Home 614-496-7883	Office 740-348-1706
Rotary Awards	Jerry Besanceney	Home 614-394-3908	
	Jim Cooper	Home 740-344-2270	
Rotary Volunteers	Deb Tegtmeyer	Home 740-587-2647	Office 740-345-1970
Projects	Board of directors		

ALWAYS IN OUR MEMORY
2015-16 PRESIDENT ERIN KENNEDY (1960-2015)

DISTRICT GOVERNORS FROM NEWARK ROTARY

FRANK L BEGGS- 1927-28	DARREL JONES- 1957-58
ROBERT C. BATTAT- 1970-71	THEODORE D. GRILEY- 1976-77
DONN E. ALSPACH-1988-89	ROBERT H. MCGAUGHY- 2003-2004

DIRECTOR, ROTARY INTERNATIONAL - THEODORE D. GRILEY- 1990-1992
TRUSTEE, ROTARY INTERNATIONAL FOUNDATION- THEODORE D. GRILEY- 2001-2005

ROTOGRAM

CENTENNIAL YEAR
2016-17

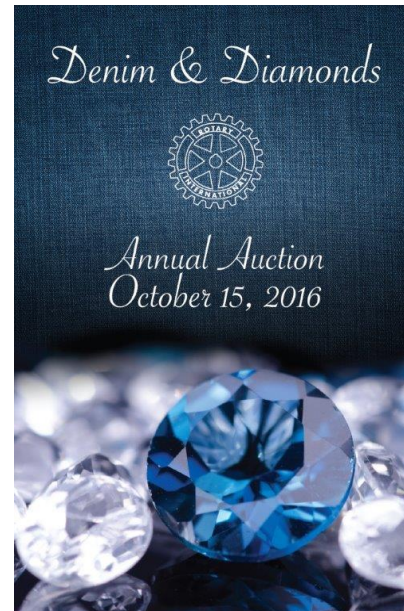


Week of Oct. 9, 2016

THIS WEEK'S MEETING

Noon Tuesday at Newark DoubleTree for Dr. George Kalbous, Update on Russia.

ANNUAL AUCTION 5 P.M. SATURDAY



CELEBRATING 100

In 1976-77, our District Governor was Newark's T.D. Griley. This document is from that year's District



THEODORE D. GRILEY
DISTRICT GOVERNOR 1976-77
A Rotary is honored to elected the 1976-77 District Governor the Newark Rotary, because of the successful program which the Rotary USA

Conference at Salt Fork Lodge. Note also, our District was 669 in those days. It became 6690 in 1990-91.

UPCOMING PROGRAMS

All meetings at Noon Tuesday, Newark Doubletree Hotel, unless noted.

Oct. 18: Mark Weaver, "Presidential Elections and Politics"

Oct. 25: Tom Stickrath, Superintendent, Ohio Bureau of Criminal Investigation.

Nov. 1: "Ohio: The Veteran State" Rotarian Jerry Besanceney.

Nov. 8: Ken Schuppert Jr., Trustee, The Rotary Foundation

A ROTARY INTERNATIONAL CLUB

NEWARKOHIOROTARY.ORG

FACEBOOK: NEWARKROTARYCLUB

DISTRICT6690.ORG



Last week's meeting

Reporter: Joyce Malainy

President Jack Neely rang the bell. **Tom Slater** and **Peter Larson** started us singing R-O-T-A-R-Y. **Tom Hall** led us in the invocation and Pledge of Allegiance. Tom Slater and Peter Larson then led the group singing "The Air Force Song."

Guests: President-Elect **Chuck Moore** introduced guests Olivia Hersman and Shelby Robbin (Heath High School), guests of **Jim Roberts**; Cheri Boyer, guest of **John Carlson**; Major Paul Hrad, Neil Erno, Monica Morales, Ron Yates, and Todd Yeatts, guests of **Rick Platt**; Margaret Griesen and Jim Gussen, guests of **Stu Parsons**; Jim Cooper, guest of **T. D. Griley**; Laurie White, guest of **Bonnie Coe**; Stacie Stout, guest of **Deb Tegtmeyer**.

Announcements:

- **Tom Mullady:** Reminded us of various auction raffles.
- **Angie Ryan:** Auction October 15th; recognized auction committee; Order denim shirts today; donations accepted until the 11th.
- **Deb Tegtmeyer:** Need auction volunteers for the following: Registration table, set-up; selling raffle tickets, bar keepers, silent auction runners, auction spotters, clean-up (done by 8:00 p.m.)

Three-Minute Speech: Nate Strum works for the Licking County Chamber of Commerce and Grow Licking County. He interviewed 1 year ago today for this position. He's from Pittsburgh but married a Clevelander. He collects Pittsburgh memorabilia and his passion is Work Force Development. (See bio at right.)

Sergeant-At-Arms: Pat Jeffries fined Nate Strum for 1 minute, 55 second speech; all Air Force Alumni; **Duke Frost** – running for Judge (digital billboard on Route 16); Clown sightings; **Peter Larson** – picture in the paper – Newark-Granville Symphony & Hats Off; **Tom Cummiskey, Tim Fitterer, Luke Baus** – picture of golfing; **Jerry Besanceney** – 1st Distinguished Alumni Award – Newark Campus; **Bonnie Coe** – new gymnasium.

Auction – 100th Anniversary Wine – Glenn Abel \$110.00; OSU/Indiana Football Tickets - Jack Stickle \$275.00

Program: Rick Platt introduced Major General Warren Berry, who has 30 years in the Air Force. He explained there are many similarities between the Air Force and Rotary. In 1961, the government announced Air Force was coming to Newark with Congressman John Ashbrook in attendance. The importance of the Newark mission has not declined.

A lot has changed. The Air Force has a smaller footprint in Newark and nationally. In 1990, there were 607,000 active members. There are just 317,000 today. Members must be agile, creative and innovative.

Drawing: Jerry Nethers - #861517

Thought of the week: "On October 4, 1957, the Soviet Union launched the first artificial satellite, Sputnik, into orbit around the Earth, ushering in the Space Age and the Space Race."

Meet new Rotarian: Nate Strum

Nate Strum is a 2006 graduate of Muskingum University where he received a B.A. in political science and speech communication. Nate took advantage of a university exchange and studied American Political Systems at the American University. In 2006, Nate was named Political Science Scholar of the Year for his public policy research work and his successful internship with the City of Zanesville's Zoning Office.



Nate began his career in economic development as the City of Zanesville's Planner/Zoning Administrator from 2006-2008, where he collaborated with the local Port Authority on development of the Northpointe Drive region of the city as well as overseeing the implementation of the city's zoning code.

In 2008, Nate left for an opportunity with Allegheny County Economic Development in Pittsburgh, where he served as a Business Development Specialist. Over the next 7 years, first with Allegheny County and then as a Project Manager with Regional Industrial Development Corporation of Southwestern Pennsylvania, Nate oversaw the ongoing redevelopment of 1,000 acres of brownfields within Southwestern Pennsylvania while successfully procuring and administrating over \$67 million.

In addition to his professional work, Nate volunteered from 2012-2015 with the Brew House Association, a local non-profit, in its efforts to redevelop a former brewery into a mixed-use facility to support the regional arts. From 2014-2015, Nate led an effort to collaborate with a regional partner that successful received over \$2 million in tax credit financing for the project.